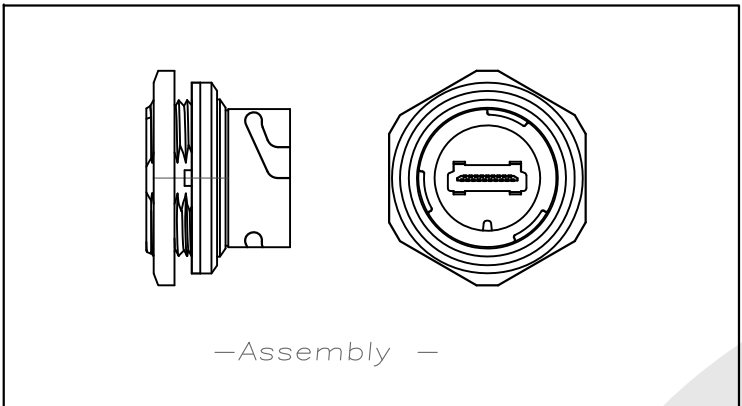
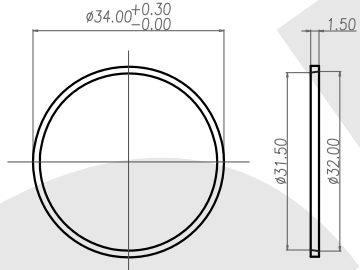


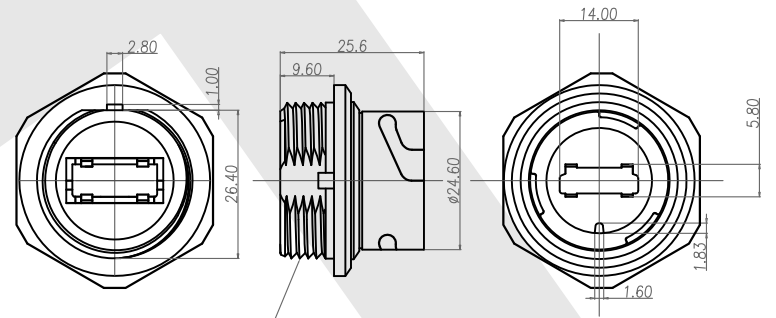
Rev	Revisions	Rev.Drawn	Date
A		Du	25.11.2008



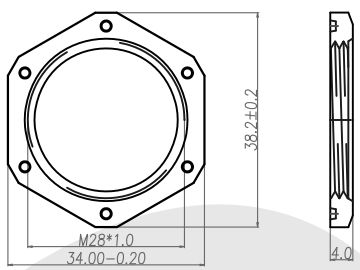
-Assembly -



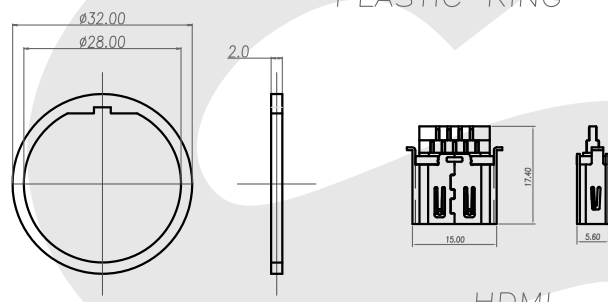
-PLASTIC RING-



-BOPY-

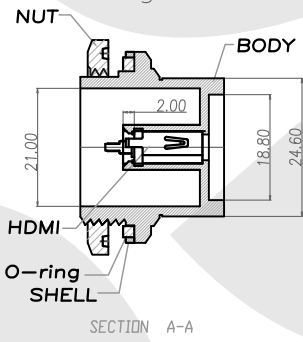


-Nut-

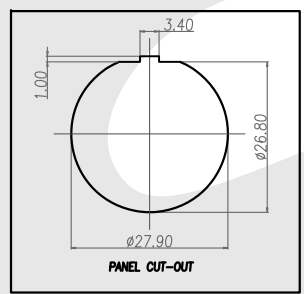


-HDMI-

-O-ring-



ASSEMBLY



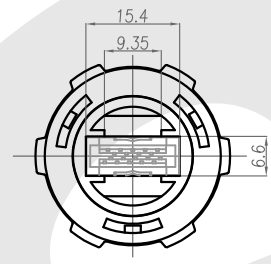
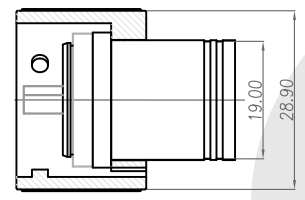
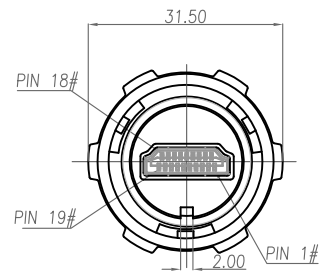
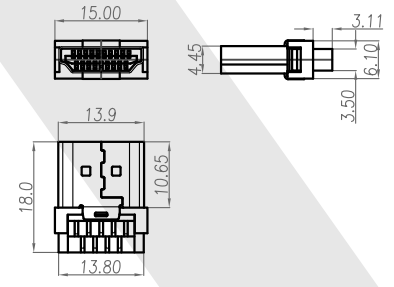
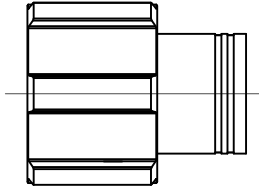
PANEL CUT-OUT

- MATERIAL :**
 - 1-1. BODY : PBT UL94V-0 ; COLOR : BLACK
 - 1-2. PLASTIC RING: PBT UL94V-0 ; COLOR : BLACK
 - 1-3. NUT : PBT UL94V-0 ; COLOR : BLACK
 - 1-4. O-RING :SILICONE ; COLOR : BLACK
 - 1-5. HDMI :
 - 1-5-1 CONTACT A : BRONZE
 - 1-5-2 SHELL : BRASS
 - 1-5-3 HOUSING : LCP UL94V-0 ; COLOR : BLACK
 - 1-5-4 CUP: LCP UL94V-0 ; COLOR : BLACK
- HDMI FINISH :**
 - 2-1. CONTACT A : 15 MICRO INCHES MIN. GOLD PLATED
SOLDER AREA : MATTE TIN.
UNDER PLATE : NICKEL
 - 2-2. SHELL: GLOD FLASH PLATED
UNDER PLATE : NICKEL
- ELECTRICAL SPECIFICATION :**
 - 3-1. Rated current :0.5A
 - 3-2. Voltage :40V
 - 3-3. Water proof: IPX7
- Environmental :**
 - 4-1. Operation Temperature : -20 ℃~85℃

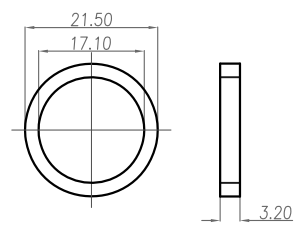
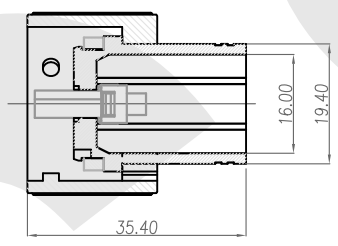
SST SOUTH SEA TERMINAL CO.,LTD

SGS Report No.:	Customer:	Part No.:
	WP-HM-19-F-B-A-BL-28x1.0-GF-BK	
Title: HDMI FEMALE SOLDER TYPE A BACK LOCK for PANEL		
Drawn By: Storm.Li	SCALE	SHEET
Checked By: du	1:1	1/1
Approved By: Tony	REV. A	
	DWG NO.: SST-081125-01	
TOLERANCE:		Units mm
X. ±2MM		
.X ±0.25MM		
Thire angle Projection		
General Dimesion Tolerance		
		.XX ±0.1MM
		.XXX±0.1MM

Rev	Revisions	Rev.Drawn	Date
A		Du	25.11.2008



HDMI 19PIN (M) 馬口鐵專用



FLAT O-RING(17.1*2.2*3.2)

防水HDMI(M) 成品(BLACK)A TYPE

TABLE A

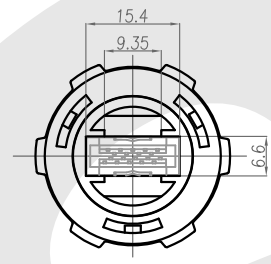
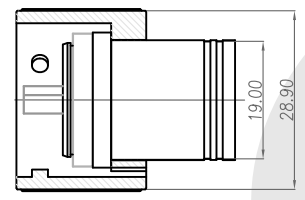
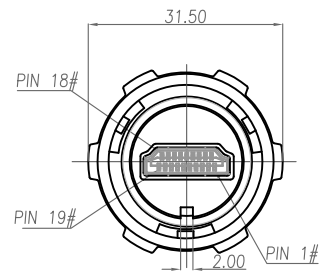
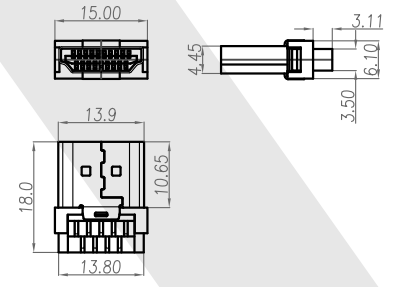
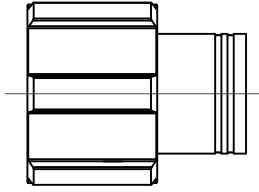
P/N	DESCRIPTION	COLOR
WP-HM-19-M-W-A-GF-BK	防水HDMI(M) 成品(BLACK)A TYPE	BLACK
WP-HM-19-M-W-A-GF-GN	防水HDMI(M) 成品(GREEN)A TYPE	GREEN
WP-HM-19-M-W-A-GF-BE	防水HDMI(M) 成品(BLUE)A TYPE	BLUE

- MATERIAL :
 - EXTERNAL HOUSING : PBT UL94V-0 ; COLOR : TABLE A
 - EXTERNAL NUT : PBT UL94V-0 ; COLOR : TABLE A
 - O-RING :SILICONE ; COLOR : BROWN
 - HDMI:
 - FRONT HOUSING: LCP.
 - BACK HOUSING: PBT+GF30%.
 - CONTACT:PHOSPHORUS BRONZE.
 - SHELL:BRASS
- FINISH :
 - CONTACT : 15 MICRO INCHES MIN. GOLD PLATED
SOLDER TAILS: TIN 100u"
UNDER PLATE : NICKEL
 - SHELL: GOLD FLASH
- ELECTRICAL SPECIFICATION:
 - WATER PROOF: IPX7

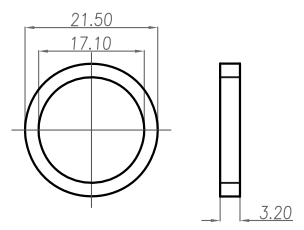
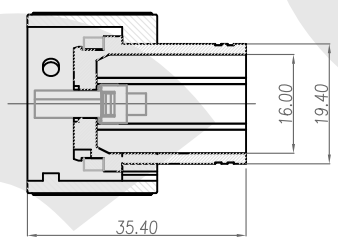
SST SOUTH SEA TERMINAL CO.,LTD

SGS Report No.:	Customer:	Part No.:
		WP-HM-19-M-W-A-GF-BK
Title: HDMI MALE SOLDER TYPE A for CABLE		
Drawn By: Storm.Li	SCALE: 1:1	SHEET: 1/1
Checked By: du	REV: A	DWG NO.: SST-081125-01
Approved By: Tony	TOLERANCE: X. ±2MM .X ±0.25MM .XX ±0.1MM .XXX±0.1MM	
Thire angle Projection General Dimesion Tolerance		Units mm

Rev	Revisions	Rev.Drawn	Date
A		Du	25.11.2008



HDMI 19PIN (M) 馬口鐵專用



FLAT O-RING(17.1*2.2*3.2)

防水HDMI(M) 成品(BLACK)A TYPE

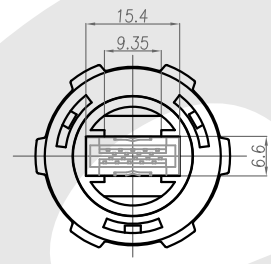
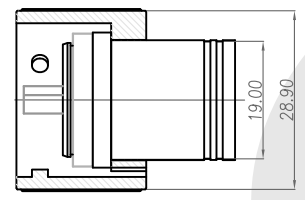
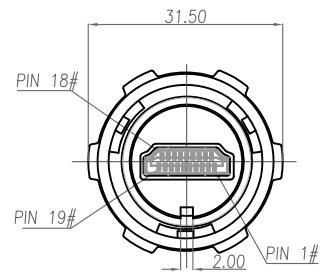
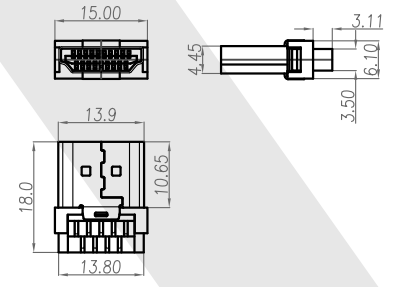
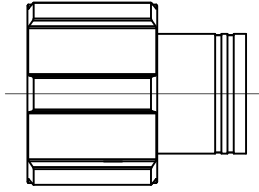
TABLE A

P/N	DESCRIPTION	COLOR
WP-HM-19-M-W-A-GF-BK	防水HDMI(M) 成品(BLACK)A TYPE	BLACK
WP-HM-19-M-W-A-GF-GN	防水HDMI(M) 成品(GREEN)A TYPE	GREEN
WP-HM-19-M-W-A-GF-BE	防水HDMI(M) 成品(BLUE)A TYPE	BLUE

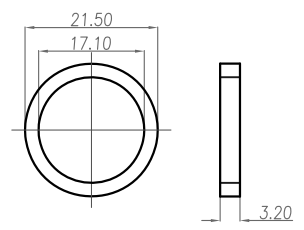
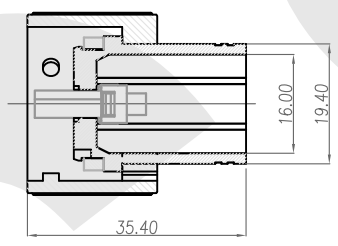
1. MATERIAL :
 - 1-1. EXTERNAL HOUSING : PBT UL94V-0 ; COLOR : TABLE A
 - 1-2. EXTERNAL NUT : PBT UL94V-0 ; COLOR : TABLE A
 - 1-3. O-RING :SILICONE ; COLOR : BROWN
 - 1-4. HDMI:
 - 1-4-1. FRONT HOUSING: LCP.
 - 1-4-2. BACK HOUSING: PBT+GF30%.
 - 1-4-3. CONTACT:PHOSPHORUS BRONZE.
 - 1-4-4. SHELL:BRASS
2. FINISH :
 - 2-1. CONTACT : 15 MICRO INCHES MIN. GOLD PLATED
SOLDER TAILS: TIN 100u"
UNDER PLATE : NICKEL
 - 2-2. SHELL: GOLD FLASH
3. ELECTRICAL SPECIFICATION:
 - 3-1. WATER PROOF: IPX7

SST SOUTH SEA TERMINAL CO.,LTD	
SGS Report No.:	Customer: Part No.: WP-HM-19-M-W-A-GF-BK
Title: HDMI MALE SOLDER TYPE A for CABLE	
Drawn By: Storm.Li	SCALE: 1:1 SHEET: 1/1 REV: A DWG NO.: SST-081125-01 TOLERANCE: X. ±2MM .X ±0.25MM
Checked By: du	Third angle Projection
Approved By: Tony	General Dimension Tolerance Units mm XXX±0.1MM

Rev	Revisions	Rev.Drawn	Date
A		Du	25.11.2008



HDMI 19PIN (M) 馬口鐵專用



FLAT O-RING(17.1*2.2*3.2)

防水HDMI(M) 成品(BLACK)A TYPE

TABLE A

P/N	DESCRIPTION	COLOR
WP-HM-19-M-W-A-GF-BK	防水HDMI(M) 成品(BLACK)A TYPE	BLACK
WP-HM-19-M-W-A-GF-GN	防水HDMI(M) 成品(GREEN)A TYPE	GREEN
WP-HM-19-M-W-A-GF-BE	防水HDMI(M) 成品(BLUE)A TYPE	BLUE

1. MATERIAL :
 - 1-1. EXTERNAL HOUSING : PBT UL94V-0 ; COLOR : TABLE A
 - 1-2. EXTERNAL NUT : PBT UL94V-0 ; COLOR : TABLE A
 - 1-3. O-RING :SILICONE ; COLOR : BROWN
 - 1-4. HDMI:
 - 1-4-1. FRONT HOUSING: LCP.
 - 1-4-2. BACK HOUSING: PBT+GF30%.
 - 1-4-3. CONTACT:PHOSPHORUS BRONZE.
 - 1-4-4. SHELL:BRASS
2. FINISH :
 - 2-1. CONTACT : 15 MICRO INCHES MIN. GOLD PLATED
SOLDER TAILS: TIN 100u"
UNDER PLATE : NICKEL
 - 2-2. SHELL: GOLD FLASH
3. ELECTRICAL SPECIFICATION:
 - 3-1. WATER PROOF: IPX7

SST SOUTH SEA TERMINAL CO.,LTD	
SGS Report No.:	Customer: Part No.: WP-HM-19-M-W-A-GF-BK
Title: HDMI MALE SOLDER TYPE A for CABLE	
Drawn By: Storm.Li	SCALE SHEET REV. DWG NO.: TOLERANCE: 1:1 1/1 A SST-081125-01 X. ±2MM X ±0.25MM
Checked By: du	Third angle Projection General Dimension Tolerance
Approved By: Tony	Units mm .XX ±0.1MM .XXX±0.1MM