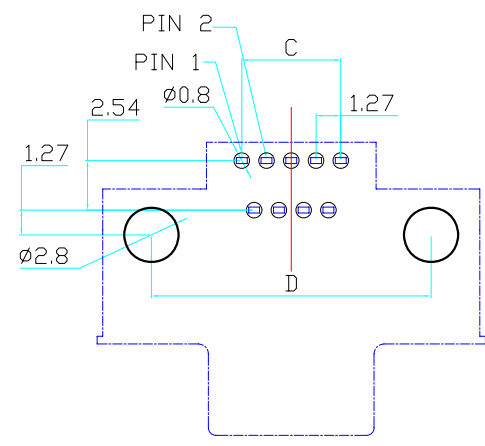
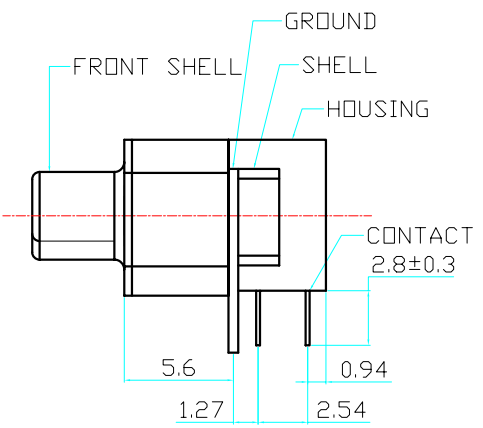
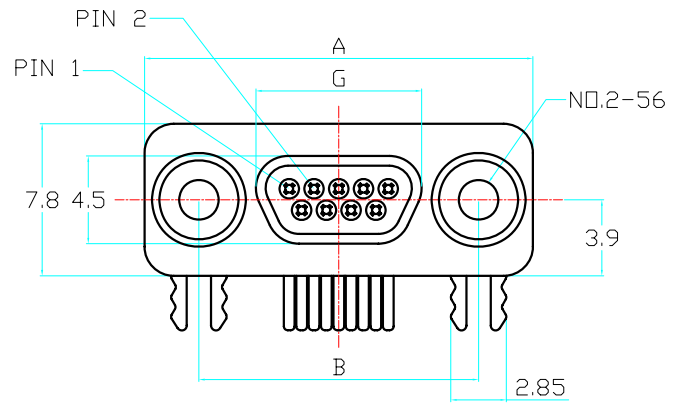


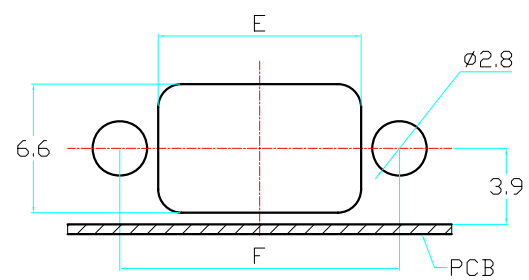
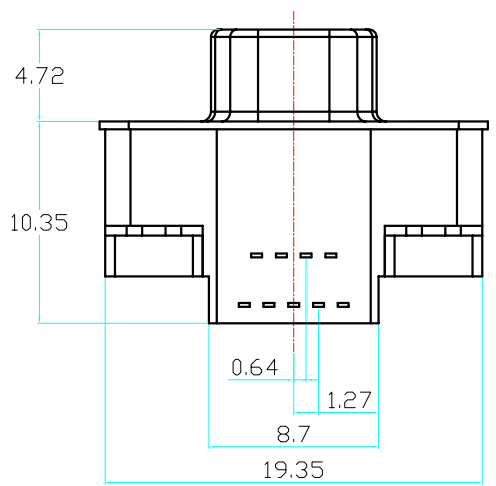


Rev	Revisions	Rev.Drawn	Date
A		Du	12,03,2010
B		Du	07,12,2011

P/N	NUMBER OF PINS	A	B	C	D	E	F	G
DB-09F3-01	9	19.93	14.35	5.08	14.35	10.41	14.35	8.30
DB-15F3-01	15	23.75	18.16	8.89	18.16	14.22	18.16	12.20
DB-25F3-01	25	30.10	24.51	15.23	24.51	20.57	24.51	18.55



**P.C.B. LAYOUT**



**PANEL CUT-OUT**

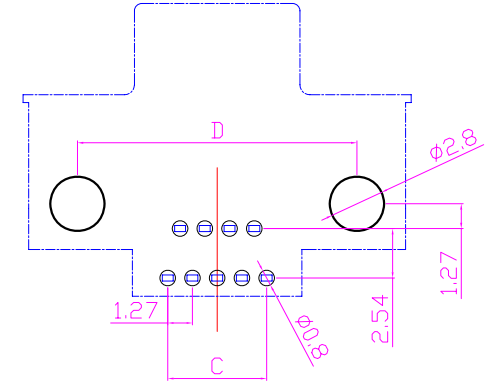
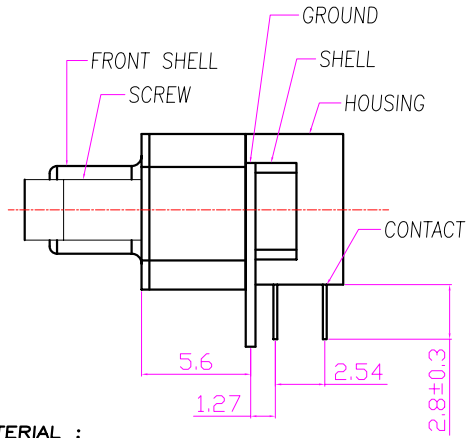
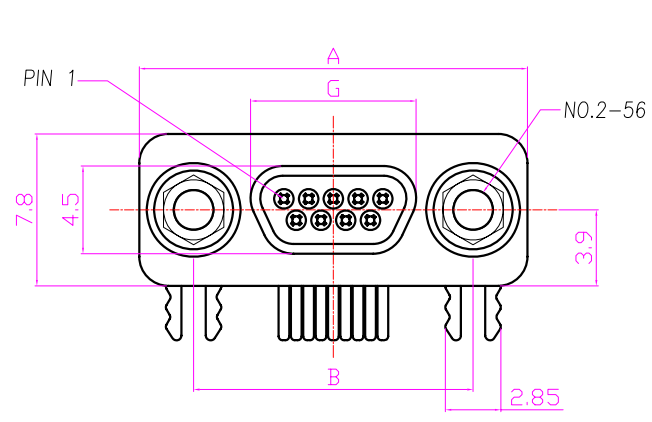
- MATERIAL :**
  - 1-1. HOUSING : LCP UL94V-0 ; COLOR : BLACK
  - 1-2. CONTACT : PHOSPHOR BRONZE
  - 1-3. FRONT SHELL : SPCC
  - 1-4. SHELL : BRASS
  - 1-5. GROUND : BRASS
- FINISH :**
  - 2-1. CONTACT : GOLD 15u" ON CONTACT AERA  
MATTE TIN 60u" ON SOLDER AERA
  - 2-2. FRONT SHELL : NICKEL PLATED 60u" ~ 100u" OVER ALL
  - 2-3. SHELL : NICKEL PLATED 60u" ~ 100u" OVER ALL
  - 2-4. GROUND : NICKEL PLATED 60u" ~ 100u" OVER ALL
- ELECTRICAL SPECIFICATION :**
  - 3-1. Rated current : 1A at 25°C/77°F, 0.7A at 70°C/158°F
  - 3-2. Voltage : 350Vac
- Environmental :**
  - 4-1. Operation Temperature : -55°C~+125°C

**SST SOUTH SEA TERMINAL CO.,LTD**

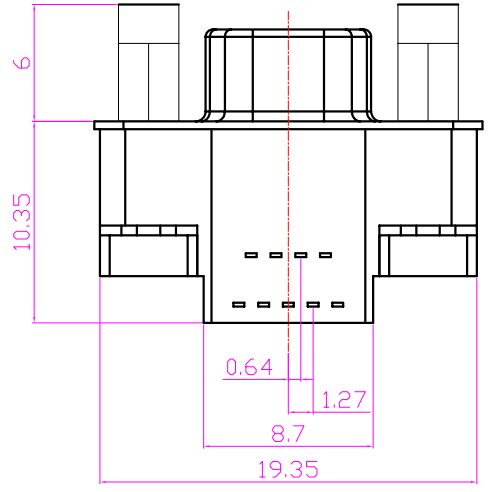
SGS Report No.:	Customer:	Part No.: DB-XXF3-01
Title: MICRO D-SUB 9-25P(F) 板L90°		
Drawn By: Storm.Li	SCALE /	SHEET 1/1
Checked By: du	REV. B	DWG NO.:
Approved By: Tony	Thire angle Projection General Dimesion Tolerance	Units mm
TOLERANCE:		ANGULAR ±1°
.x ±0.20		.xxx ±0.15
.xxxx ±0.10		.xxxx ±0.05

Rev	Revisions	Rev.Drawn	Date
A		Du	12.03.2010
B		Du	12.03.2011

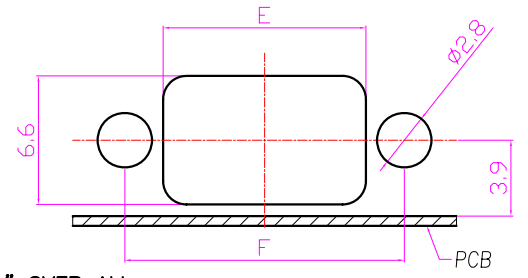
P/N	NUMBER OF PINS	A	B	C	D	E	F	G
DB-09F3-02	9	19.93	14.35	5.08	14.35	10.41	14.35	8.30
DB-15F3-02	15	23.75	18.16	8.89	18.16	14.22	18.16	12.20
DB-25F3-02	25	30.10	24.51	15.23	24.51	20.57	24.51	18.55



P.C.B LAYOUT



- MATERIAL :
  - HOUSING : LCP UL94V-0 ; COLOR : BLACK
  - CONTACT : PHOSPHOR BRONZE
  - FRONT SHELL : SPCC
  - SHELL : BRASS
  - GROUND : BRASS
  - SCREW : BRASS
- FINISH :
  - CONTACT : GOLD 15u" ON CONTACT AREA  
MATTE TIN 60u" ON SOLDER AREA
  - FRONT SHELL : NICKEL PLATED 60u" ~ 100u" OVER ALL
  - SHELL : NICKEL PLATED 60u" ~ 100u" OVER ALL
  - GROUND : NICKEL PLATED 60u" ~ 100u" OVER ALL
  - SCREW : NICKEL PLATED 60u" ~ 100u" OVER ALL
- ELECTRICAL SPECIFICATION :
  - Rated current : 1A at 25°C/77°F, 0.7A at 70°C/158°F
  - Voltage : 350Vac
- Environmental :
  - Operation Temperature : -40°C~+125°C



PANEL CUT-OUT

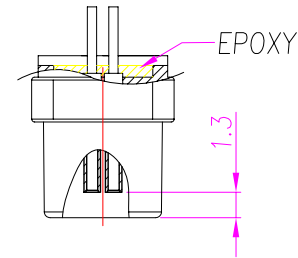
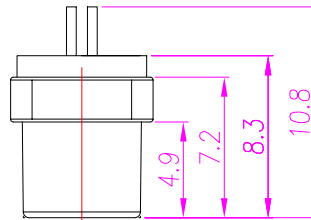
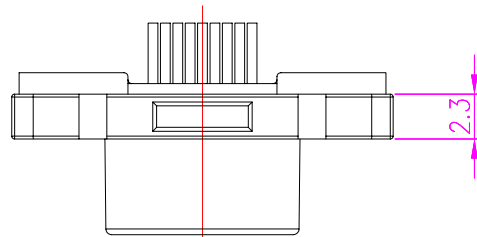
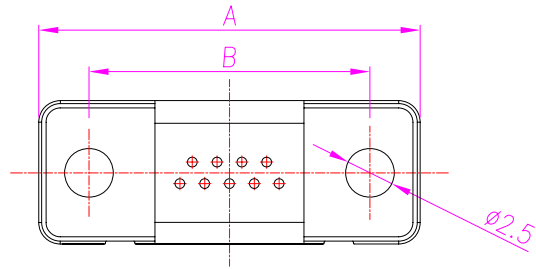
**SST SOUTH SEA TERMINAL CO.,LTD**

SGS Report No.:	Customer:	Part No.:	DB-XXF3-02
Title: MICRO D-SUB 9-25P(F) 板±90°			
Drawn By: Storm.Li	SCALE	SHEET	REV.
Checked By: du	/	1/1	B
Approved By: Tony	Thire angle Projection General Dimesion Tolerance		DWG NO.:
			Units mm
			TOLERANCE: .x ±0.20 .xx ±0.15 .xxx ±0.10 .xxxx ±0.05 ANGULAR ±1°

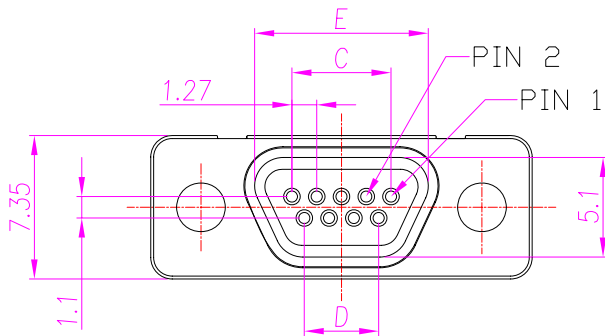
Rev	Revisions	Rev.Drawn	Date
A		Du	25.08.2010
B		Du	07.12.2011

TABLE A

P/N	NUMBER OF PINS	A	B	C	D	E
DB-09M2-04	9	19.55	14.35	5.08	3.81	8.90
DB-15M2-02	15	23.36	18.20	8.89	7.62	12.60
DB-25M2-02	25	29.70	24.55	15.24	13.97	19.20



- MATERIAL :
  - HOUSING : PBT UL94V-0 ; COLOR : BLACK
  - CONTACT : BRASS
  - SHELL : Zn Alloy
- FINISH :
  - CONTACT : 15u" GOLD OVER 60u" MIN, NICKEL ON MATING & SOLDER AREA
  - SHELL : NICKEL PLATED 60u" ~ 100u" ON OVER ALL
- ELECTRICAL SPECIFICATION :
  - RATED CURRENT : 1A at 25°C/77°F, 0.7A at 70°C/158°F
  - VOLTAGE : 350Vac
  - WITHSTANDING VOLTAGE: 630V AC
  - CONTACT RESISTANCE: 15 mΩ (MAX) INITIAL  
CONTACT RESISTANCE: 30 mΩ (MAX) FINAL
  - INSULATION RESISTANCE: 1000 M ohms (MIN)
- Environmental :
  - Operation Temperature : -40°C~+125°C



**SST SOUTH SEA TERMINAL CO.,LTD**

SGS Report No.:	Customer:	Part No.: DB-XXM2-0X
Title: MICRO D-SUB MALE 9P-25P		
Drawn By: Storm.Li	SCALE /	SHEET 1/1
Checked By: du	REV. B	DWG NO. /
Approved By: Tony	Thire angle Projection	Units mm
General Dimesion Tolerance		TOLERANCE: .x ±0.20 .xx ±0.15 .xxx ±0.10 .xxxx ±0.05 ANGULAR ±1°