

Management Software

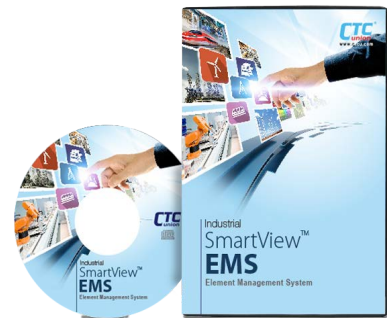
- Centralized Device Management
- Real-time visual representations & processing of alarms
- Long term event storage (**up to 1 year**)
- Easy, User-Friendly Operation Interface

CTCUnion's Industrial Network Management System is a comprehensive management tool, including **SmartView™ Element Management System (EMS)** and **SmartConfig™**. Whether it is for monitoring, configuration, maintenance, or troubleshooting, the management software has a tool for every task.

SmartView™ EMS

(Element Management System)

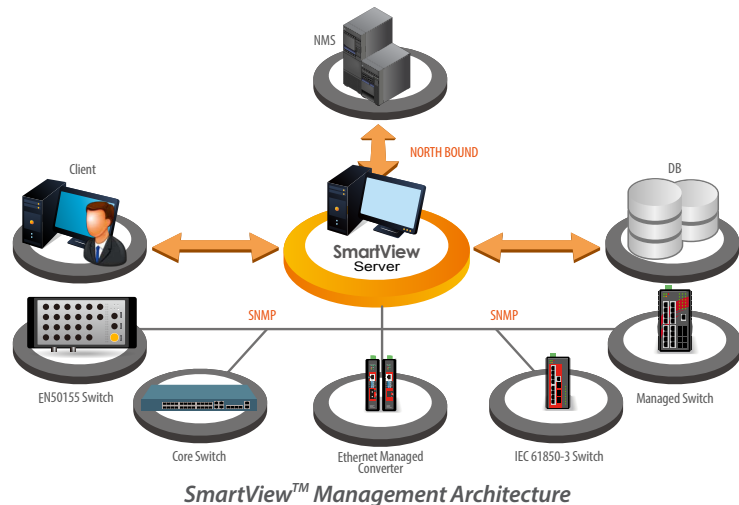
- Main Functions (**FCAPS**):
 - Fault Management
 - Configuration Management
 - Accounting Management
 - Performance Management
 - Security Management
- Remote access control for efficient configuration
- Traffic / Performance monitoring and management
- Alarm Trap and event log management
- Auto Discovery and Device Viewer
- Allow up to 25 administrators to login



Polled Network Elements

Network Scheme Diagram

- User-Friendly Operation Interface
- Robust Client / Server architecture
- Network Monitoring and Management
- Database for persistent event storage
- Security Access Management



SmartView™ Management Architecture

• Agents

The server handles connections with the network devices using SNMP protocol and is responsible for communicating of requests from management clients. SmartView™ Server collects information data from specific SNMP agents, stores the information into a persistent database and updates that information to the management clients.

• SmartView™ Server

The server handles connection with the network devices using SNMP protocol, and is responsible for communication of requests from management clients. SmartView™ Server collects the information data from specific SNMP agents, stores the information into a persistent database and updates that information to the management clients. SmartView™ server requires 64bit Microsoft® Windows™ O.S.

• Microsoft® SQL Server for Persistent Storage

SQL Server is the place where SmartView™ stores collected data, such as alarms, traps and user actions, for long term retrieval. SmartView™ requires Microsoft® SQL Server and is compatible with SQL 2008 Server, SQL 2008 Express, SQL 2014 Server and SQL 2014 Express. (The EMS installer will install the free version Microsoft® SQL 2008 Express or SQL 2014 Express under Windows 10 by default).

• Workstation-Clients

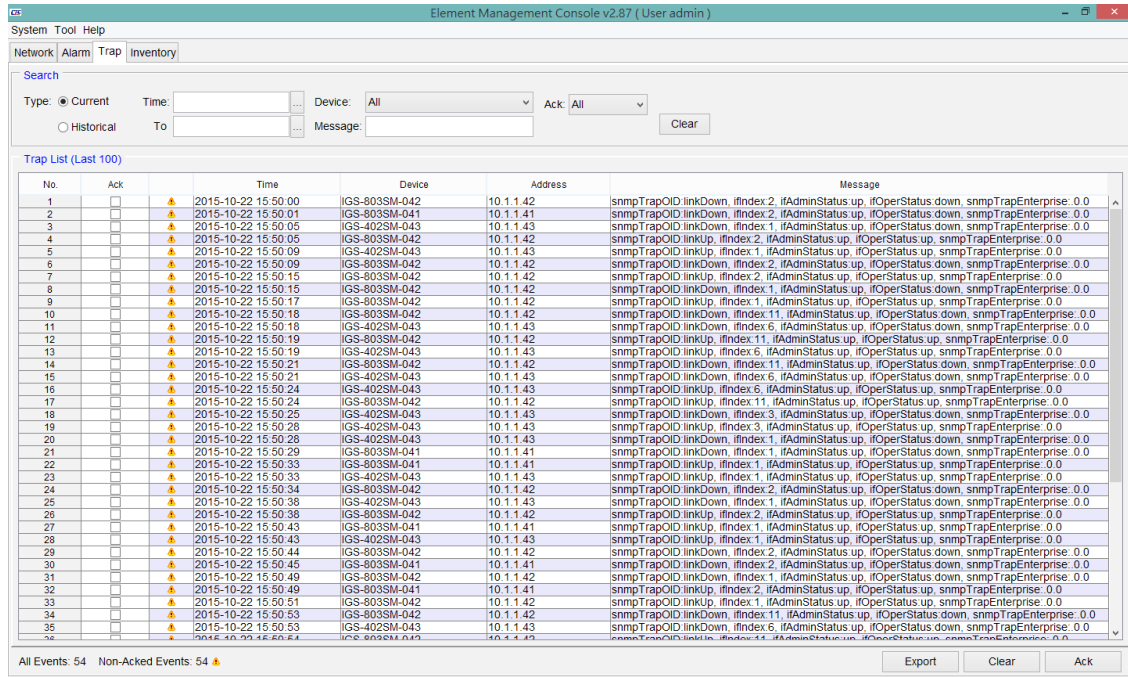
Management clients are provided with the JAVA applet GUI to monitor and control the agents at far end. They also receive the Alarm and Traps from the corresponding SNMP Agents. Multiple workstations are allowed, with a maximum of 25 concurrent logged in users.

Features at a Glance

- Fault Management

Trap Collection

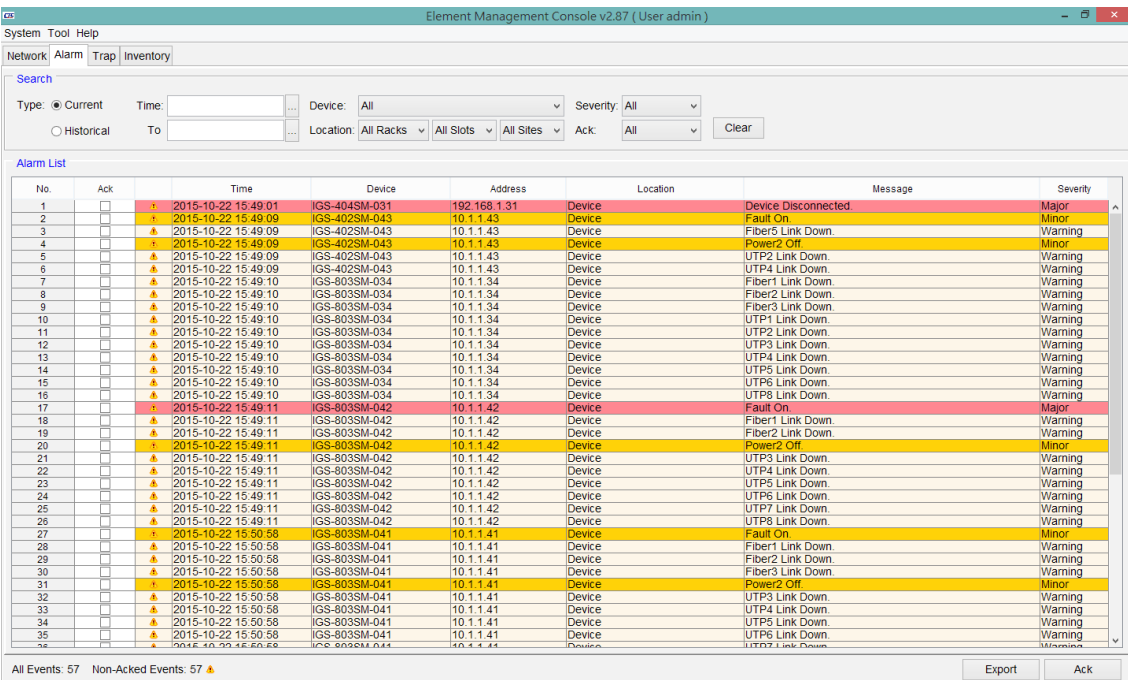
All traps will be stored in SQL database. When an SNMP agent experiences an abnormal condition it will send an SNMP trap message to SmartView™ which then receives the message, and records it in the database. Depending on preset conditions, SmartView™ may sound an audible alarm, send an email or SMS alert message or just simply flash the trap message on the administrative console screen.



Trap Messages

Active Alarm

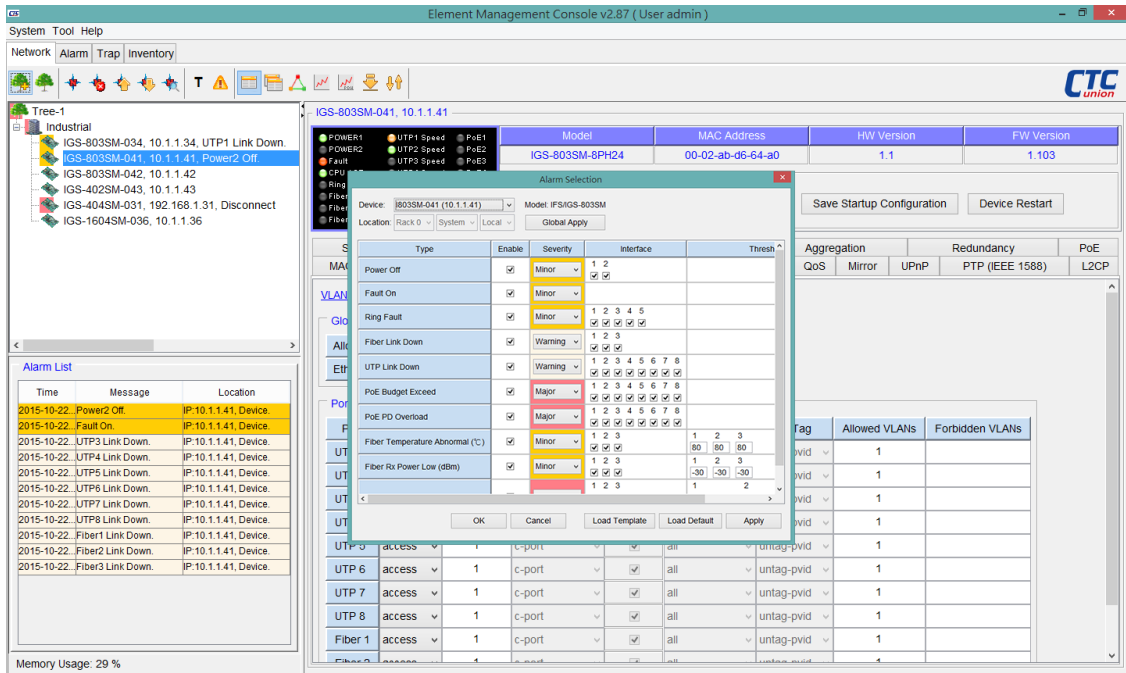
SmartView™ continuously polls all network devices under its management and will visually display all alarm conditions found. Alarms will be categorized as Major, Minor or Warning, depending on severity. Although alarms may be acknowledged, they remain actively displayed on the alarm page until there is no longer an alarm condition.



Active Warning

Alarm Selection

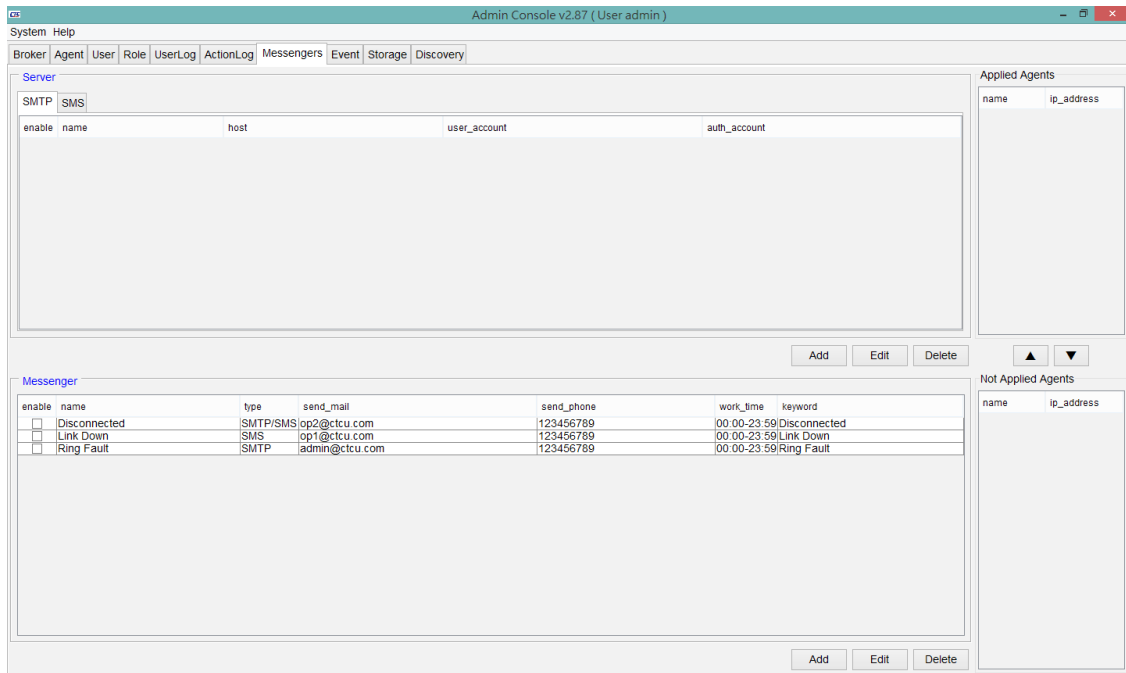
Alarm events of network element are configurable. All alarm events are warned by default, but they can be manually disabled to ignore warning messages.



Alarms Selection

Alarms sent by E-mail & SMS

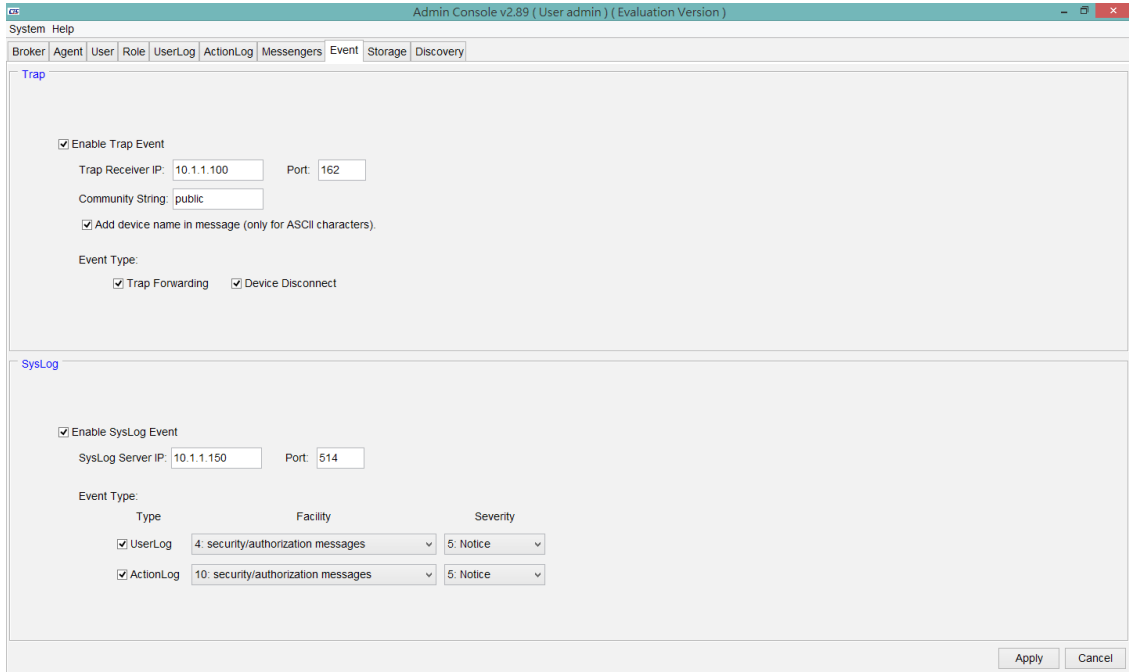
The SmartView™ is capable of sending emails and or SMS text messages to selected administrators when critical alarms occur. Prompt notification of system problems aid in getting problems in the network devices fixed in the shortest time possible.



Alarms Sent by Email & SMS

Trap Forwarding and Syslog messages

The SmartView™ is capable of forwarding received traps to upper network management and sending event messages to a syslog server.



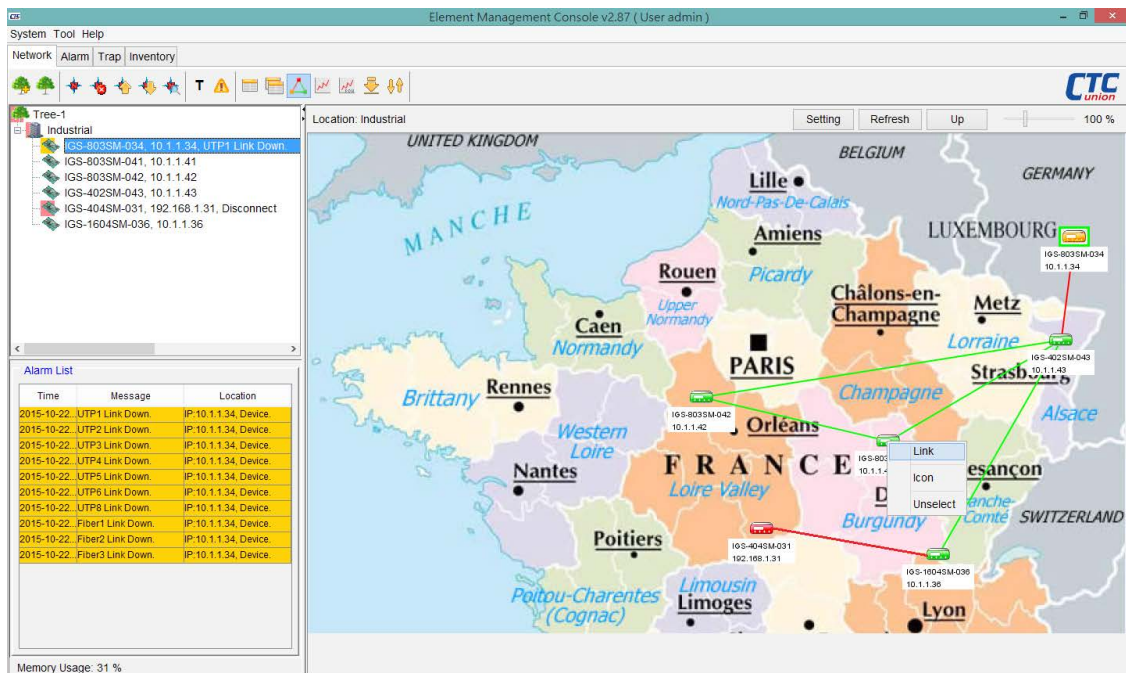
Trap Forwarding Syslog Message

Configuration Management

Network Topology

Using drag-and-drop, put any object to map area. Any label or network element location name may be added to object. Objects in red color indicate some alarm condition is present in the device.

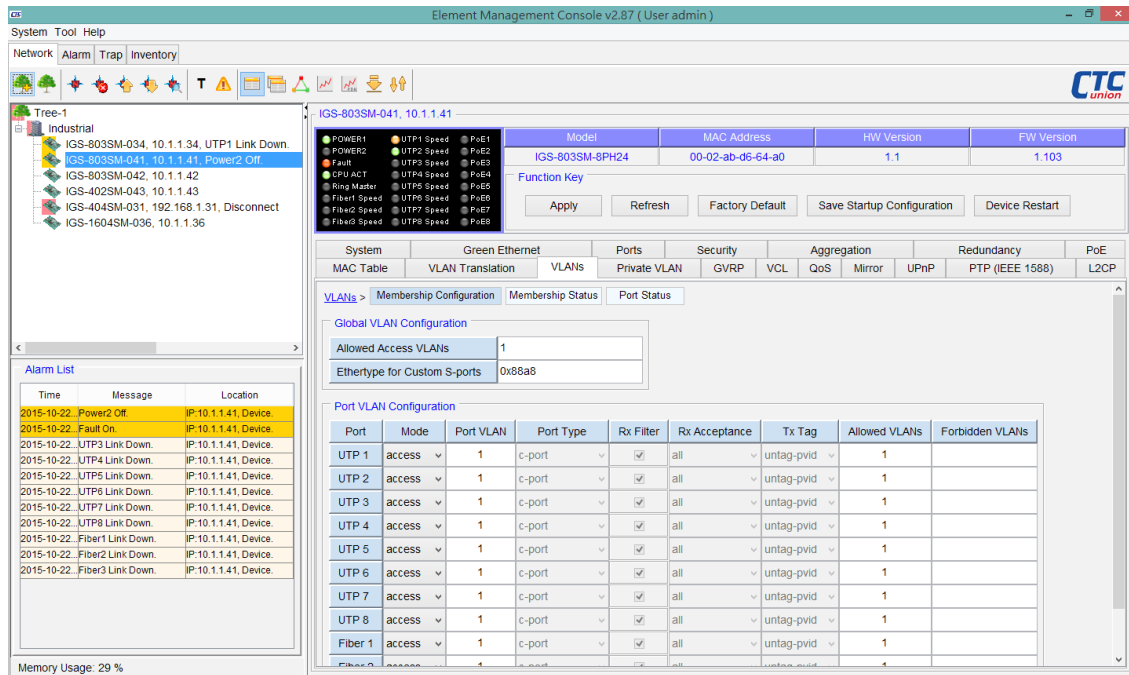
User can load maps to SQL server, load maps from SQL server or delete attached maps. Map area may be used to layout any objects from Root and Node panel.



Network Topology

Network Element Configuration

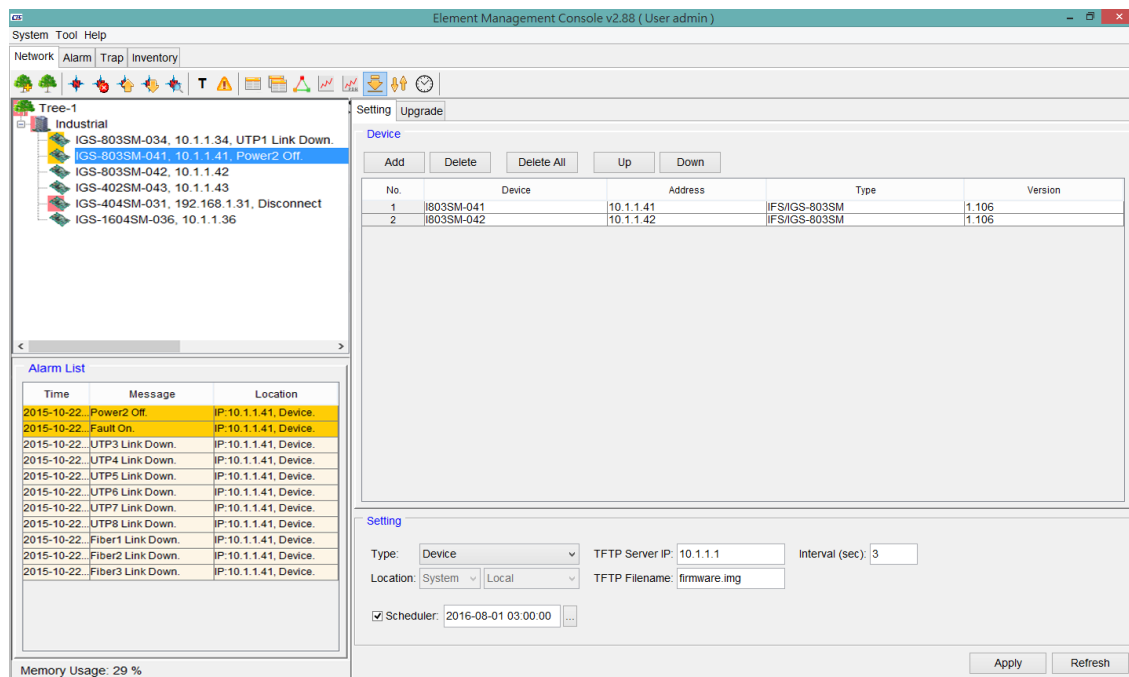
SmartView™ is able to provide a single point of configuration for the network device elements. Most settings only require mouse clicks and by using a tab format, most scrolling is eliminated. Current settings and status are displayed along with hardware and firmware versions for each element.



Network Element Configuration

Network Element Firmware Upgrade

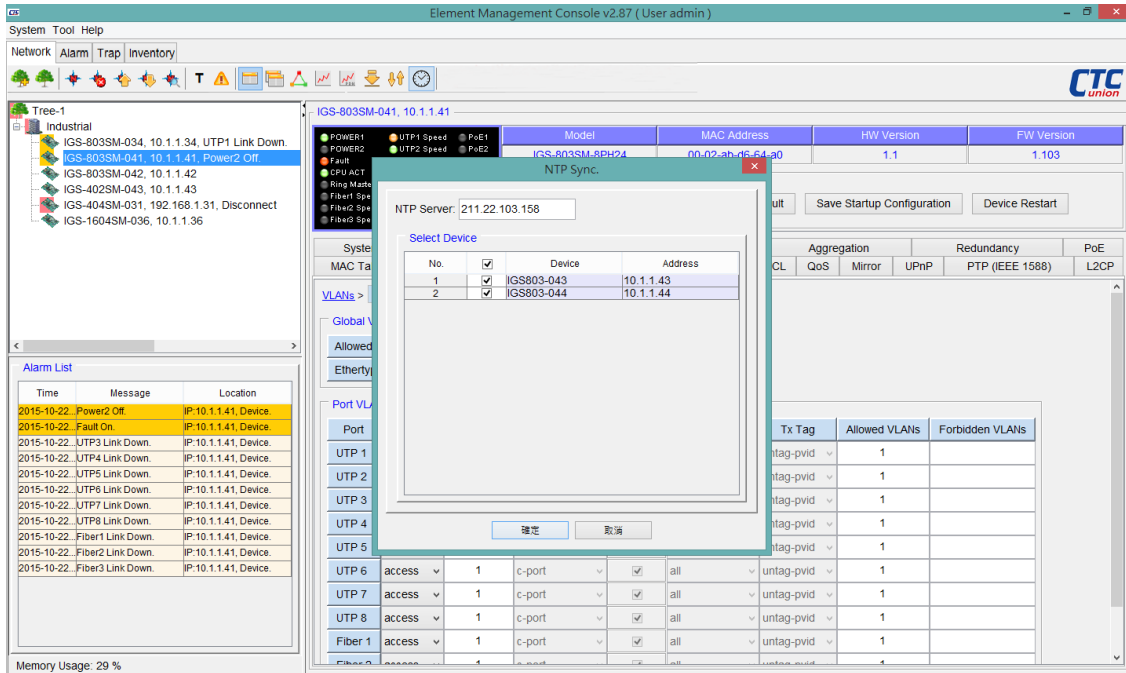
SmartView™ is able to download firmware to device elements and perform configuration backup/restore.



Network Element Firmware Upgrade

Network Element Time Synchronization

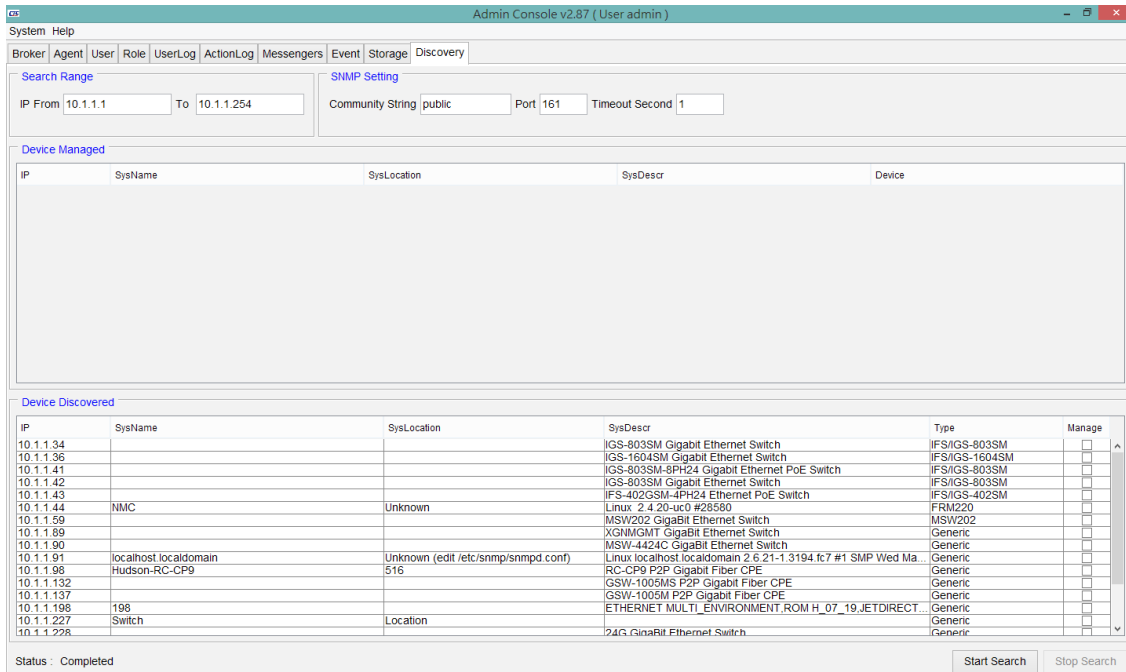
SmartView™ is able to trigger a command to network elements™ to perform time synchronization with Smartview or a NTP server.



Network Element Time Synchronization

Network Element Discovery

SmartView™ has a tool for automatically discovering SNMP agents on the network. Simply enter an IP address range and the discovery program will ping every IP address looking for SNMP agents. Once discovered, the agents can be selected and brought into the broker for polling.



Network Element Discovery

▪ Accounting Management

The accounting management supports property overview for each network device. The location, status and version of all assets can be managed and exported.

No.	Device	Address	Location	Type	HW Version	FW Version	Serial Number	Alias	Status	Date
1	IGS-1604SM-036	10.1.1.36	Device	IGS-1604SM	1.1	1.103	None		Online	2015-10-22 15:36:44
2	IGS-803SM-041	10.1.1.41	Device	IGS-803SM-8PH24	1.1	1.103	None		Online	2015-10-22 15:36:41
3	IGS-803SM-042	10.1.1.42	Device	IGS-803SM	1.2	1.103	None		Online	2015-10-22 15:36:41
4	IGS-402SM-043	10.1.1.43	Device	IFS-402GSM-4PH24	1.1	1.103	None		Online	2015-10-22 15:36:40
5	IGS-803SM-034	10.1.1.34	Device	IGS-803SM	1.0	1.104	None		Online	2015-10-22 15:36:40
6	IGS-404SM-031	192.168.1.31	Device	IGS-404SM-4PH24	1.1	1.103	None		Offline	2015-10-22 15:40:19

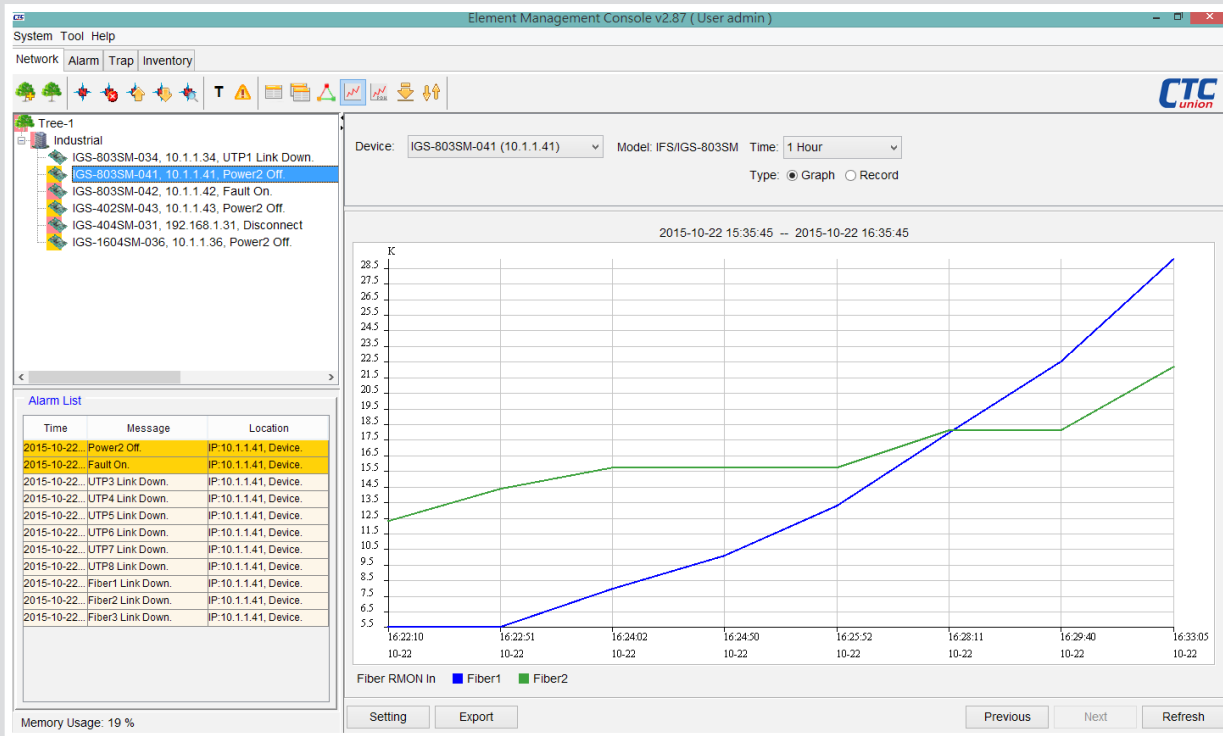
Inventory List

No.	Device	Type	Online	Offline	Total
1	IFS/IGS-1604SM				
2		IGS-1604SM	1	0	1
3					
4	IFS/IGS-402SM				
5		IFS-402GSM-4PH24	1	0	1
6					
7	IFS/IGS-404SM				
8		IGS-404SM-4PH24	0	1	1
9					
10	IFS/IGS-803SM				
11		IGS-803SM	2	0	2
12		IGS-803SM-8PH24	1	0	1
13					

Inventory Summary

• Performance Management

SmartView™ is able to monitor device performance parameters through polling of specific OIDs. Graphs of performance information (for example PDH PM data such as ES, UAS, etc. as well as hardware parameters such as fan speed, temperature, optical Tx/Rx power or RMON counters) can be generated on an X Y axis showing different trend data.



Performance Graphics

Device: IGS-803SM-041 (10.1.1.41) Model: IFS/IGS-803SM Time: 1 Hour Type: Graph Record

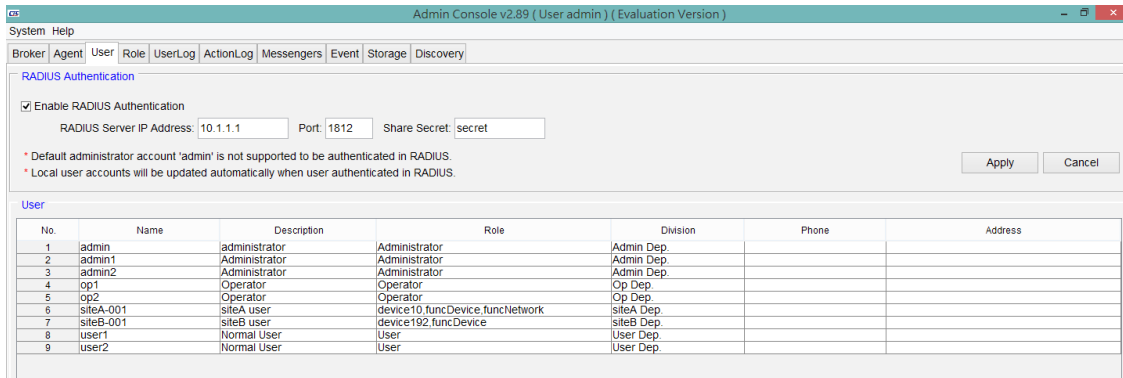
No.	Device	Address	Time	Param	Interface	Value
1	IGS-803SM-041	10.1.1.41	2015-10-22 16:22:10	Fiber RMON In	1	5536
2	IGS-803SM-041	10.1.1.41	2015-10-22 16:22:10	Fiber RMON In	2	12354
3	IGS-803SM-041	10.1.1.41	2015-10-22 16:22:51	Fiber RMON In	1	5536
4	IGS-803SM-041	10.1.1.41	2015-10-22 16:22:51	Fiber RMON In	2	14422
5	IGS-803SM-041	10.1.1.41	2015-10-22 16:24:02	Fiber RMON In	1	7998
6	IGS-803SM-041	10.1.1.41	2015-10-22 16:24:02	Fiber RMON In	2	15758
7	IGS-803SM-041	10.1.1.41	2015-10-22 16:24:50	Fiber RMON In	1	10134
8	IGS-803SM-041	10.1.1.41	2015-10-22 16:24:50	Fiber RMON In	2	15758
9	IGS-803SM-041	10.1.1.41	2015-10-22 16:25:52	Fiber RMON In	1	13338
10	IGS-803SM-041	10.1.1.41	2015-10-22 16:25:52	Fiber RMON In	2	15758
11	IGS-803SM-041	10.1.1.41	2015-10-22 16:28:11	Fiber RMON In	1	18004
12	IGS-803SM-041	10.1.1.41	2015-10-22 16:28:11	Fiber RMON In	2	18156
13	IGS-803SM-041	10.1.1.41	2015-10-22 16:29:40	Fiber RMON In	1	22544
14	IGS-803SM-041	10.1.1.41	2015-10-22 16:29:40	Fiber RMON In	2	18156
15	IGS-803SM-041	10.1.1.41	2015-10-22 16:33:05	Fiber RMON In	1	28090
16	IGS-803SM-041	10.1.1.41	2015-10-22 16:33:05	Fiber RMON In	2	22222
17	IGS-803SM-041	10.1.1.41	2015-10-22 16:38:05	Fiber RMON In	1	44126
18	IGS-803SM-041	10.1.1.41	2015-10-22 16:38:05	Fiber RMON In	2	22222
19	IGS-803SM-041	10.1.1.41	2015-10-22 16:43:04	Fiber RMON In	1	59022
20	IGS-803SM-041	10.1.1.41	2015-10-22 16:43:04	Fiber RMON In	2	22222
21	IGS-803SM-041	10.1.1.41	2015-10-22 16:48:04	Fiber RMON In	1	74126
22	IGS-803SM-041	10.1.1.41	2015-10-22 16:48:04	Fiber RMON In	2	22222

Performance Records

▪ Security Management

User Privilege

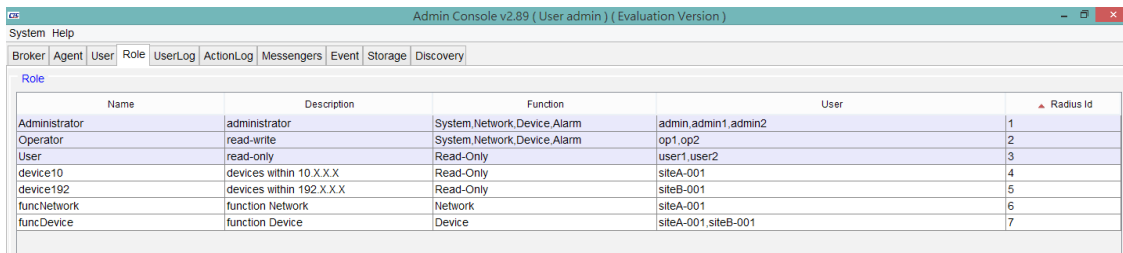
- The administrator can add necessary user logins with specific privileges, from Administrator to Operator and lastly to normal user.
- Radius Authentication. Supports authentication login provided by credentials stored on RADIUS server.



User Privilege

User Role

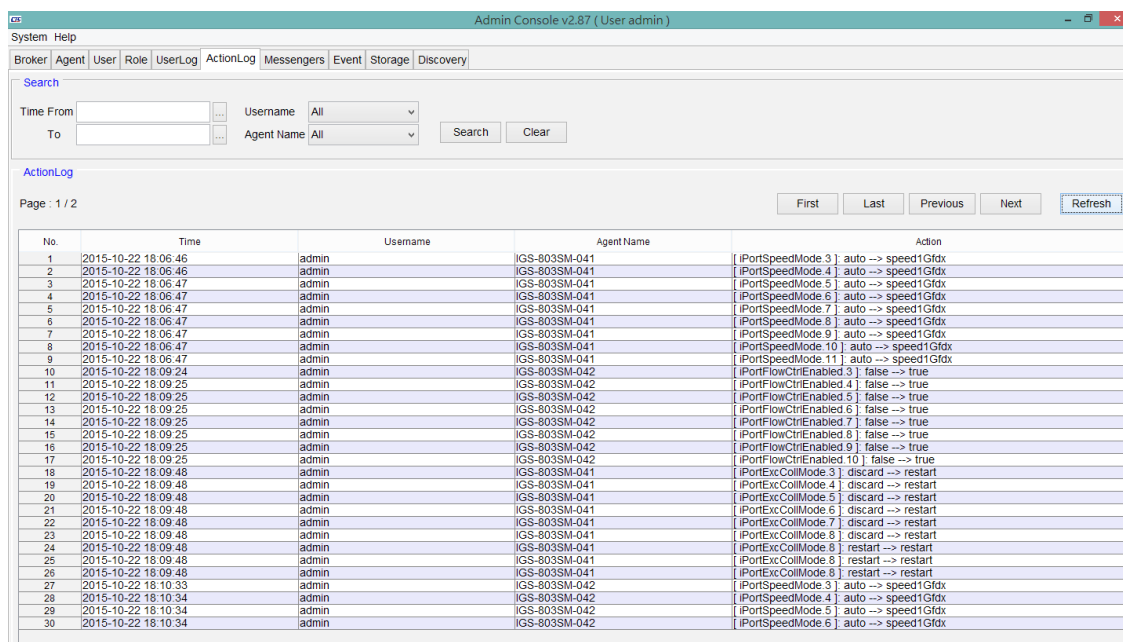
A user role is a group and defines privileges for users to perform management tasks. The access to network elements is also restricted by user role.



User Role

User Activity

Provides viewing and clearing of the user login and configuration action logs. User client login & logouts are recorded, including the client's source IP address. All activities performed on any Network Element are logged with time-stamping, the user making changes and the changes made.



User Activity

System Requirements

SmartView™	Hardware (minimum)	Software	Operating System
SmartView™ Server	Intel Core2 or higher processor, 2GB RAM, 40GB HD	JAVA JRE. SmartView™ Kit. MS-SQL Server	Windows Server 2012/2014 Win 7/8/10 (64)
SmartView™ Clients	Intel Core2 or higher processor, 2GB RAM, 20GB HD	JAVA JRE. SmartView™ Kit.	Windows 7/8/10 (64)
All-In-One	Intel Core2 or higher processor, 4GB RAM, 80GB HD	JAVA JRE. MS-SQL Server. SmartView™ Kit. SmartView™ Server/Client	Windows Server 2012/2014, Win 7/8/10 (64)
SmartConfig™	Hardware (minimum)	Software	Operating System
SmartConfig™	CPU : 2 GHz or faster Dual core RAM : 1GB, Hard Disc : 1GB	—	Windows 7/8/10

Ordering Information

SmartView™ EMS Server for industrial product

Model Name	Description
SV2-AGT-50	SmartView™ management software with 50 nodes (by IP address)
SV2-AGT-100	SmartView™ management software with 100 nodes (by IP address)
SV2-AGT-200	SmartView™ management software with 200 nodes (by IP address)
SV2-AGT-500	SmartView™ management software with 500 nodes (by IP address)
SV2-AGT-1000	SmartView™ management software with 1000 nodes (by IP address)
SV2-AGT-1500	SmartView™ management software with 1500 nodes (by IP address)
SV2-AGT-2000	SmartView™ management software with 2000 nodes (by IP address)