

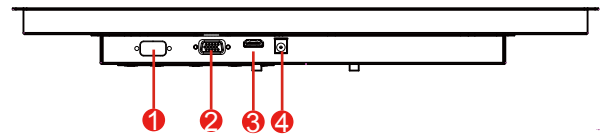
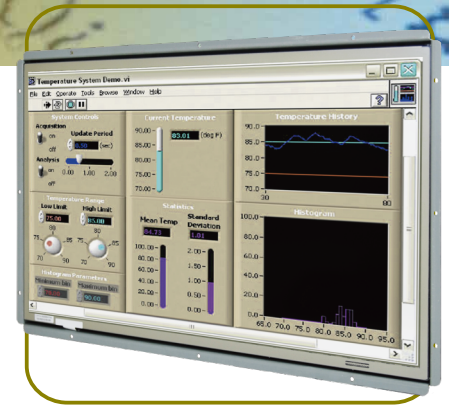
Open Frame LCD

Open Frame LCD

18.5" Wide Specifications

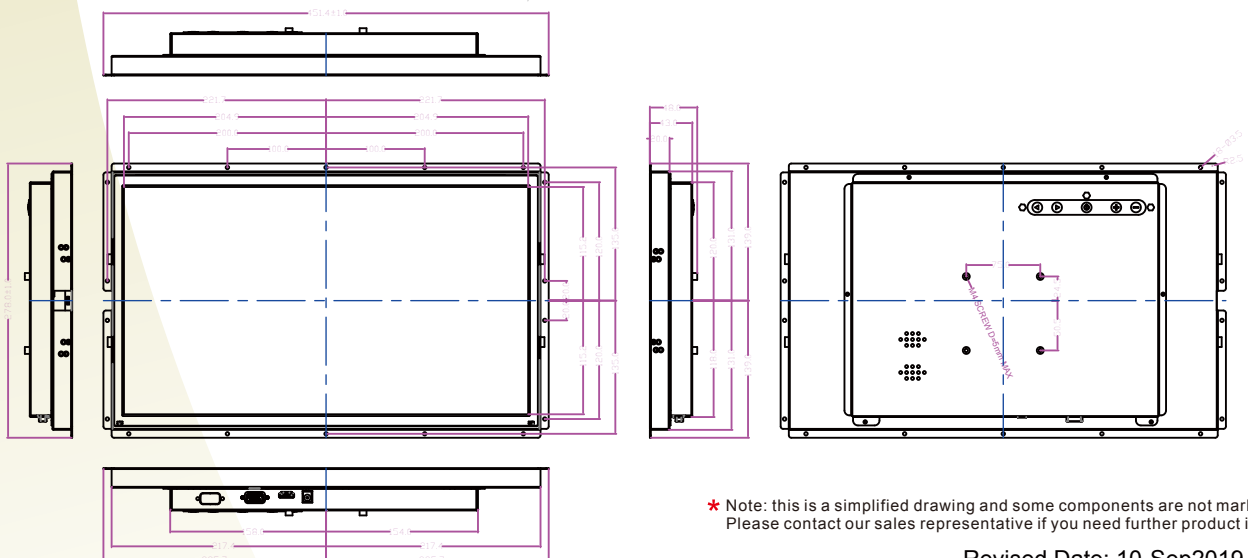


Model Name	W18L100-OFA3HB
Panel Size	18.5"
Active Display Area(mm)	408.96(H)x230.04(V)
Resolution	1920 x 1080
Brightness(cd/m2)	1000(Typical)
Contrast Ratio	1000:1 (Typical)
Viewing Angles(CR>=10 L/R/U/D)	-89~89(H) ; -89~89(V)
Display Colors	16.7M (8 bits/color)
Standard Input Signal	1 x VGA (D-sub 15) 1 x HDMI (Type-A)
Touch Screen(Optional-1)	Resistive Touch Protective Glass
Touch Interface	USB / RS232
OSD	5 Keys: -, +, Power, Esc, Enter
Power Input	12V DC input (2.5 ψ) with external AC-DC Adapter (100V~240V)
Power Consumption	39W typical, Normal operation
Operating temperature	0~50 $^{\circ}$ C
Storage Temperature	-10~60 $^{\circ}$ C
Accessories	Power AC-DC Adapter(100V~240V) VGA cable (1.8m) HDMI cable (2m)



1. Touch
2. VGA
3. HDMI
4. DC-in

Mechanical Drawing



* Note: this is a simplified drawing and some components are not marked in detail. Please contact our sales representative if you need further product information.

Revised Date: 10-Sep2019 C1.0